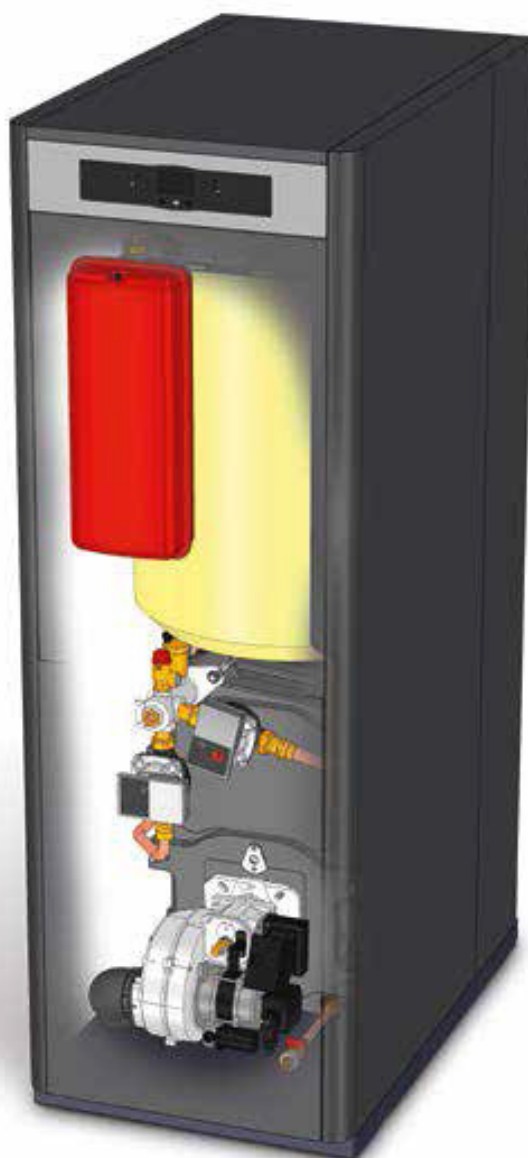


HAUFMANN



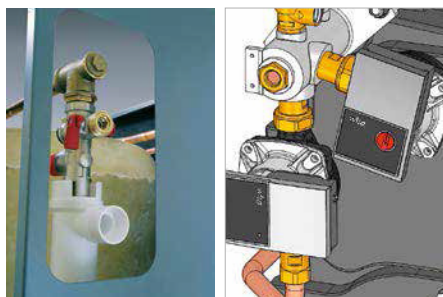
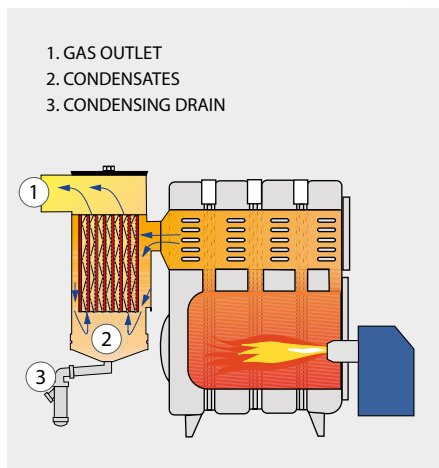
Cast Iron Condensing Boiler +120 Liter Water Tank

KLIMA EV



KLIMA EV





Doble bomba



E20

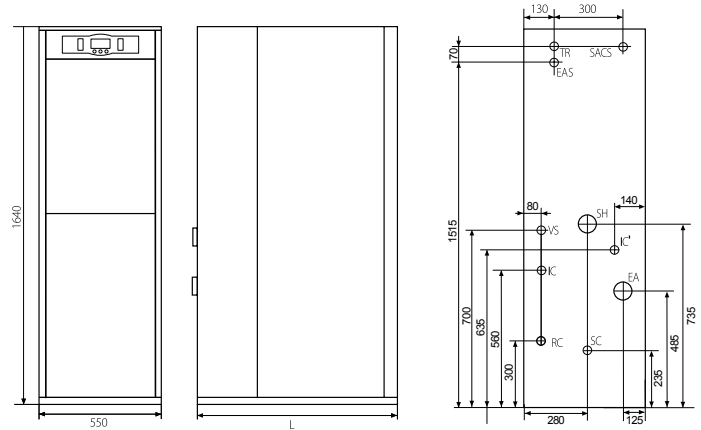
Hydraulic kit SRX2/EV



DIMENSIONS

- IC: Heating flow.
- RC: Heating return.
- SACS: Domestic hot water outlet.
- EA: Air intake, Ø100.
- SH: Gas outlet, Ø100.
- TR: DHW recirculation outlet.
- EAS: Domestic cold water intake.
- IC': Optional heating flow.
- SC: Condensate outlet, 4/3" H.
- VS: Safety valve.

Model	SACS EAS	IC RC	L	SH	EA
EV 20	4/3"M	4/3"M	910	100	80
EV 30	4/3"M	4/3"M	910	100	80
EV 40	4/3"M	1"M	950	100	80

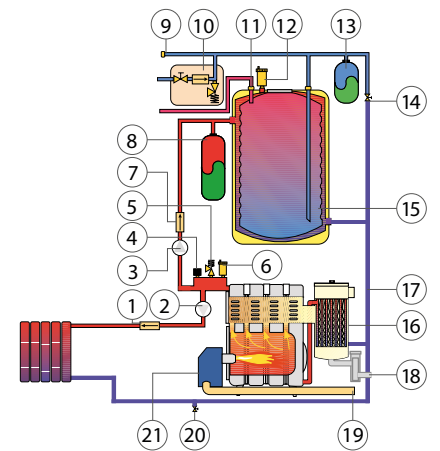


EQUIPMENT

- 1. Heating retaining valve
- 2. Heating pump
- 3. Summer pump
- 4. Pressure transducer
- 5. Safety valve
- 6. Automatic air vent
- 7. Summer retaining valve
- 8. Heating expansion vessel
- 9. Hot water recirculation outlet
- 10. DHW pressure relief unit
- 11. Dielectric coupling
- 12. Tank automatic air vent
- 13. Hot water expansion vessel
- 14. Fill valve
- 15. Stainless steel tank
- 16. Condensing boiler
- 17. Gas outlet
- 18. Condensate drain
- 19. Air intake
- 20. Emptying valve
- 21. Sealed burner
- Telephone relay connection

OPTIONS

- Cathodic protection DX
- Remote control E20
- External probe for E20
- Underfloor heating kit SRX2/EV
- Gas discharge kit



KLIMA EV INSTALLATION EXAMPLE

Maximum discharge length

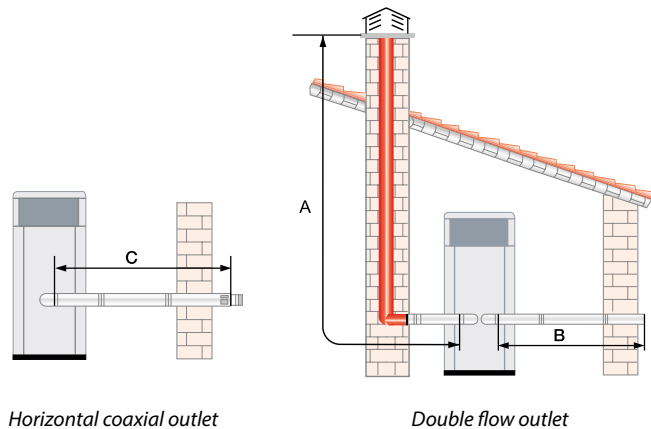
	A+B	C	SH	EA
KLIMA EV 20	15 m Ø 100	8	100	80
KLIMA EV 30	15 m Ø 100	6	100	80
KLIMA EV 40	12 m Ø 100	-	100	80

Equivalences

Diameter	90° Curve	45° Curve
125/80	1 m	0,5 m
80 or 100	1 m	0,5 m

1 horizontal metre equals 2 vertical meters.

Note: Due to the low fume temperature, the gas outlet must be airtight and made of an anticorrosive material due to the condensation of the combustion gas water vapour.



Model	Nominal power 50° C / 30° C	Nominal power 80° C / 60° C	DHW flow rate L/h Δ30°C	DHW flow rate L/10 min Δ30°C	Vol. hot water tank L	Heating Efficiency Class	DHW efficiency class
	kW	kW					
Klima EV 20	19	19.24	575	275	130	A	B
Klima EV 30	29.3	30.2	846	321	130		
Klima EV 40	40.5	41.7	846	321	130		



HAUFMANN ENERGY GMBH&CO

WWW.HAUFMANN-DE.COM

