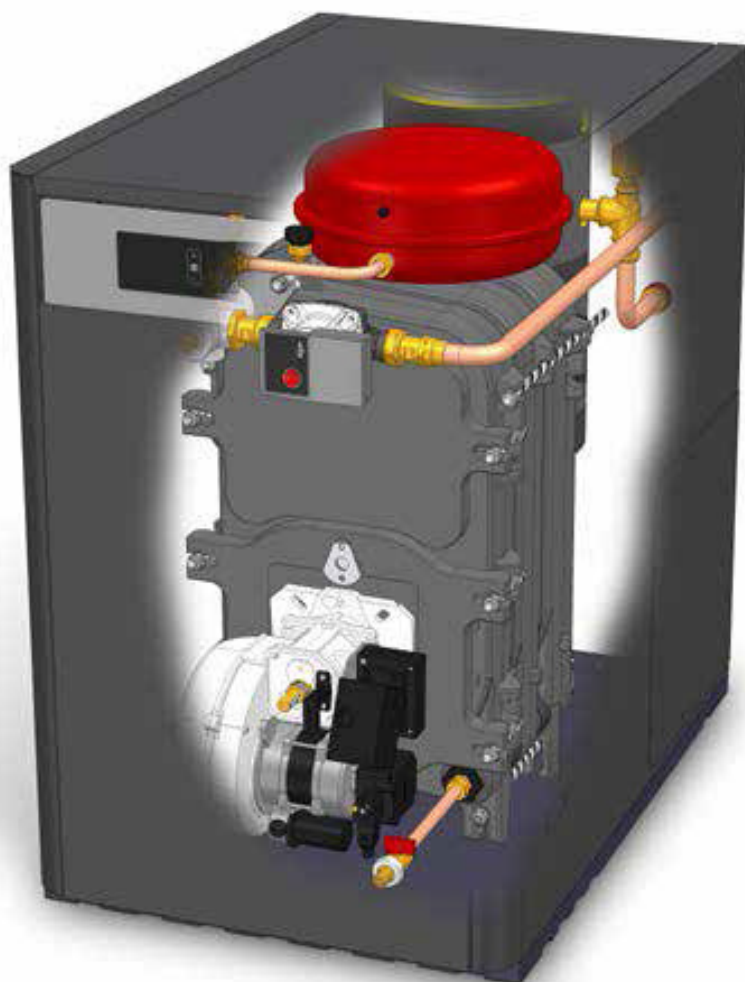


HAUFMANN

OIL FIRED CONDENSING BOILER

KLIMA C

KLIMA CPW



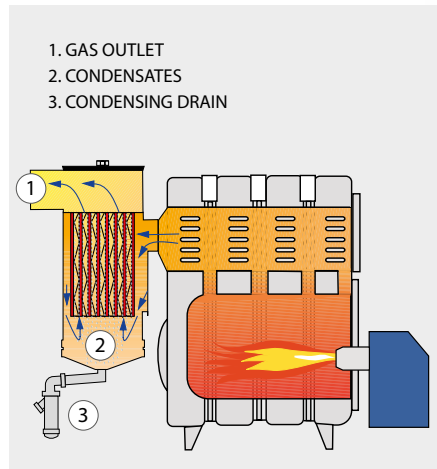
Silent
Ecological
Cast Iron Body (G G 20)
Stainless Steel Condenser



KLIMA COMPACT C

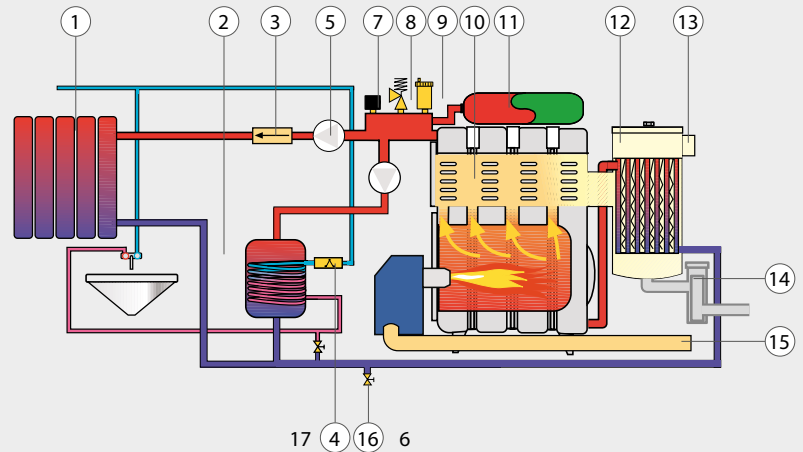


KLIMA COMPACT CPW



HYDRAULIC DIAGRAM:

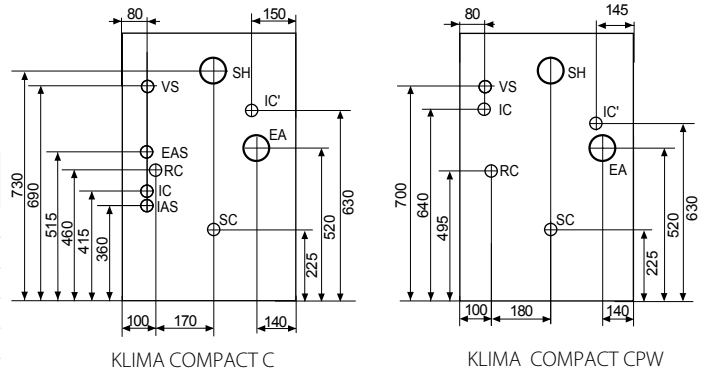
- | | | |
|----------------------------|------------------------|----------------------|
| 1. Radiator | 7. Pressure transducer | 13. Gas outlet |
| 2. Heat exchanger | 8. Safety valve | 14. Condensate drain |
| 3. Heating retaining valve | 9. Automatic air vent | 15. Air intake |
| 4. Summer retaining valve | 10. Summer pump | 16. Emptying valve |
| 5. Heating pump | 11. Expansion vessel | 17. Fill valve |
| 6. Burner | 12. Condenser | |



DIMENSIONS

IC: Heating flow. V: Emptying.
 RC: Heating return. SH: Gas outlet.
 EAS: Domestic cold water intake. SC: Condensate outlet.
 IAS: Domestic hot water intake. EA: Air intake.
 VS: Safety valve. IC': Optional heating flow.

Model	IAS EAS	IC RC	EA mm	SH mm	Depth mm	Height mm	Width mm	Weight (Kg)
COMPACT20 C	-	1"M	80	100	755	550	840	122
COMPACT30 C	-	1"M	80	100	855	550	840	155
COMPACT40 C	-	1"M	80	100	955	550	840	180
COMPACT30 CPW	2/1" M	4/3" M	80	100	855	550	840	160
COMPACT40 CPW	2/1" M	1" M	80	100	955	550	840	190



EQUIPMENT

	COMPACT C	COMPACT CPW		COMPACT S	COMPACT SWP
Heating retaining valve	•	•	Coil heat exchanger	•	
Heating pump	•	•	Flow switch	•	
Summer pump	•		Hot water flow rate limiter	•	
Pressure transducer	•	•	Pump anti-blocking	•	•
Safety valve	•	•	Minimum pressure relief device	•	•
Automatic air vent	•	•	Anti-freeze	•	•
Summer retaining valve	•		Hot water modulation	•	
Heating expansion vessel	•	•	Electrical connection for tank		•
Fill valve	•		OPTIONS		
Condensing boiler	•	•	Underfloor heating kit SRAM2 / COMPACT	•	
Condensate drain	•	•	Underfloor heating kit SRAC2 / COMPACT		•
Emptying valve	•	•	Remote control E20	•	•
Sealed burner	•	•	External probe for E20	•	•
Telephone relay connection	•	•	Gas discharge kit	•	•

KLIMA EV INSTALLATION EXAMPLE

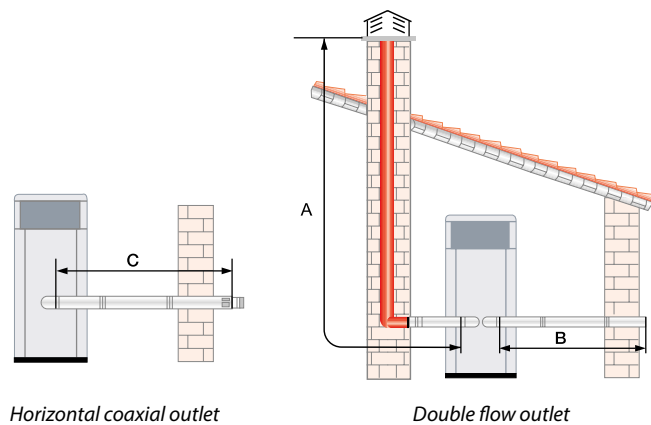
Maximum discharge length

	A+B	C
KLIMA COMPACT 20	15 m Ø 100	8
KLIMA COMPACT 30	15 m Ø 100	6
KLIMA COMPACT 40	12 m Ø 100	-

Equivalences

Diameter	90°Curve	45°Curve
125/80	1 m	0.5 m
100	1 m	0.5 m

1 horizontal metre equals 2 vertical meters.
Nota: Due to the low fume temperature, the gas outlet must be airtight and made of an anticorrosive material due to the condensation of the combustion gas water vapour.



Model	Nominal power 50° C / 30° C	Nominal power 80° C / 60° C	Production DHW L/min		Heating Efficiency Class	DHW Efficiency Class
	kW	kW	ΔT30°C	ΔT25°C		
Klima COMPACT 30 C	30.2	28.7	12.8	15.4	A	A
Klima COMPACT 40 C	40.5	38.7	17.8	21.4		
Klima COMPACT 20 CPW	20.3	19.1	-	-		
Klima COMPACT 30 CPW	30.2	28.7	-	-		
Klima COMPACT 40 CPW	40.5	38.7	-	-		



HAUFMANN ENERGY GMBH&CO

WWW.HAUFMANN-DE.COM

